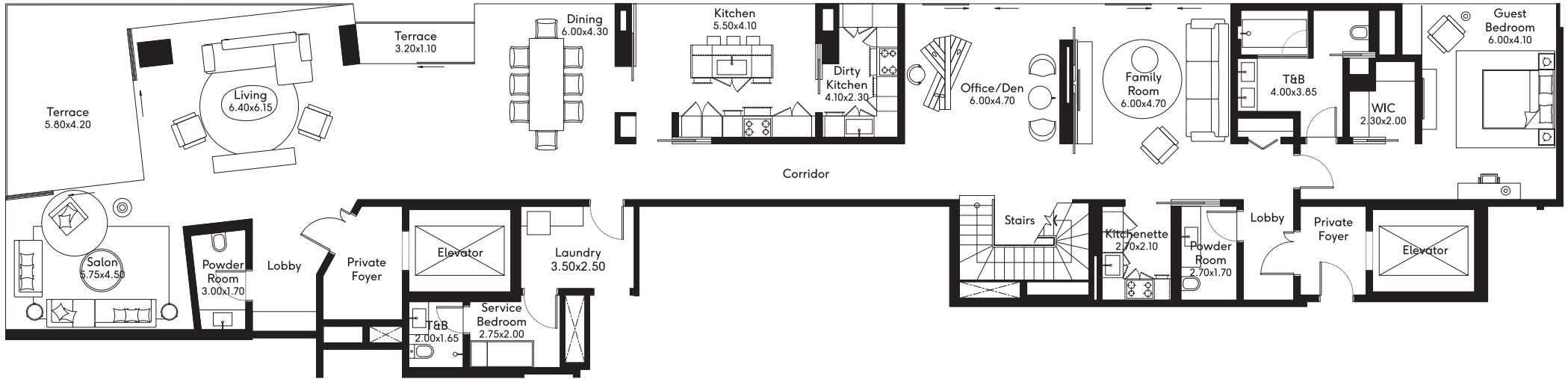
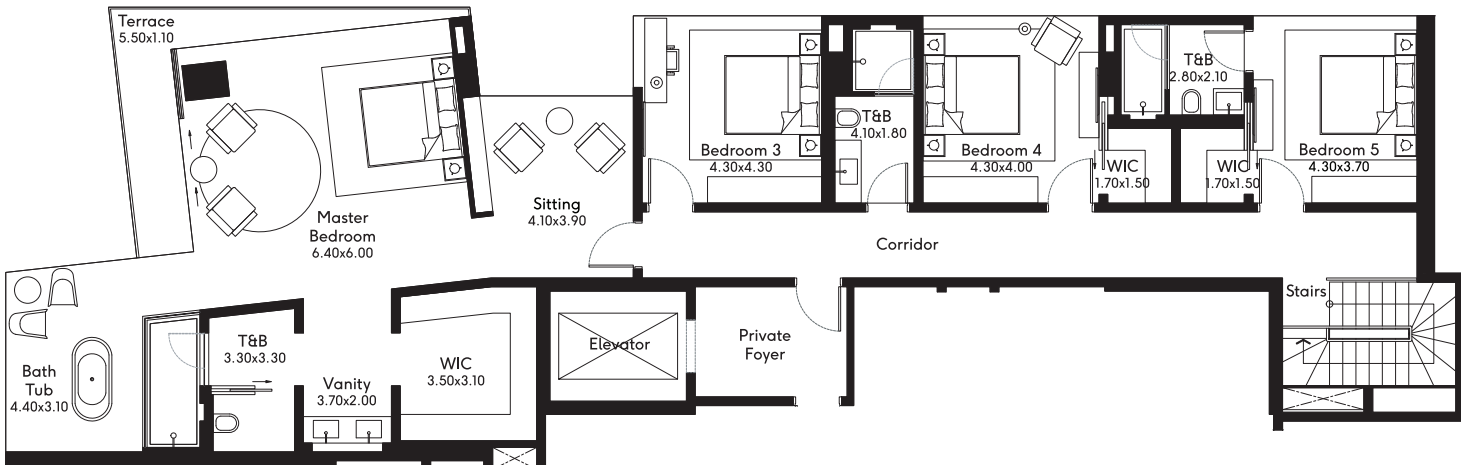


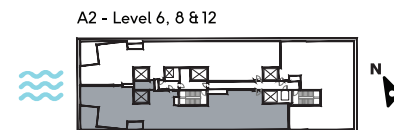
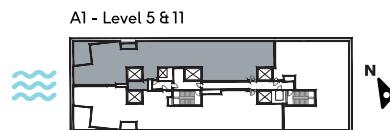
**TYPE A (LEVEL 1) - FIVE BEDROOM UNIT - 365.21 sq.m.**



**TYPE A (LEVEL 2) - FIVE BEDROOM UNIT - 236.85 sq.m.**

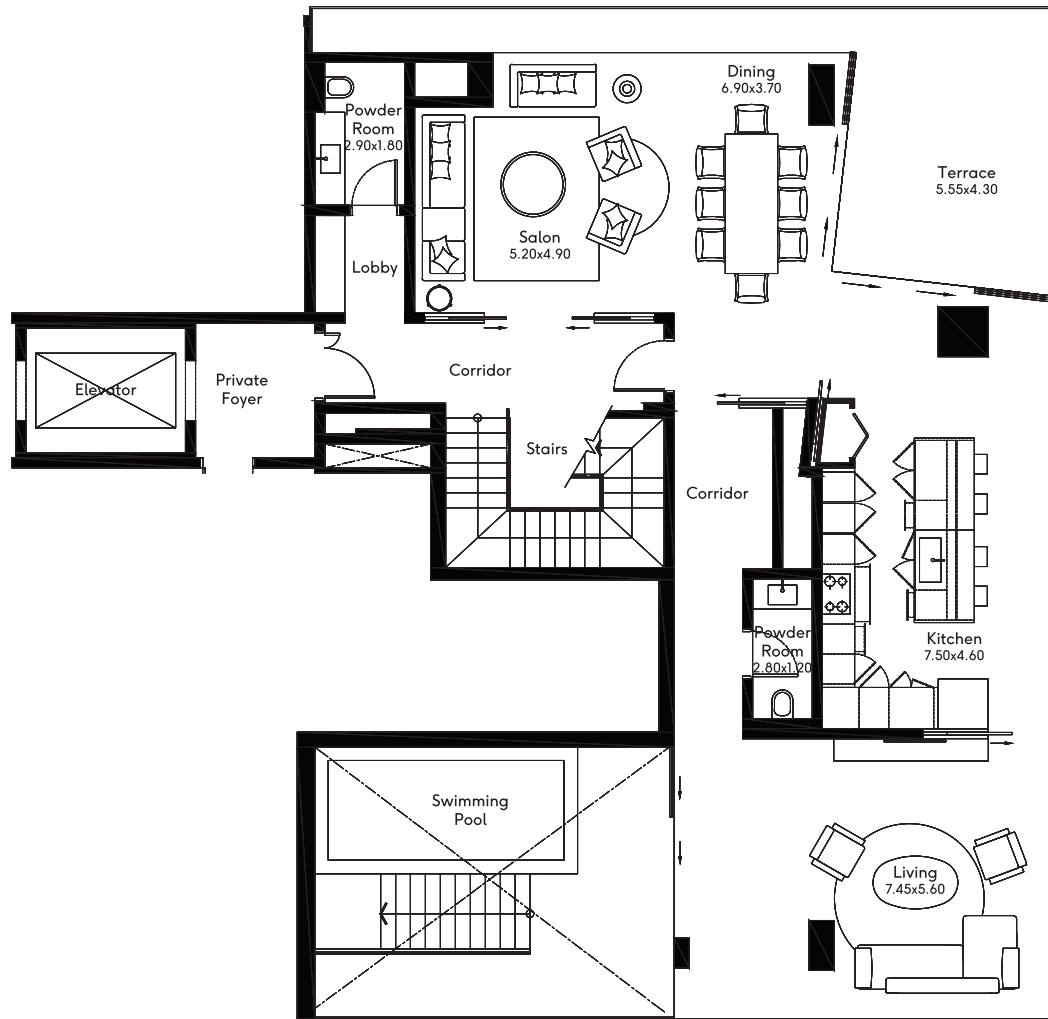


| Unit Area    | Terrace Area | Total Area   | Total Units |
|--------------|--------------|--------------|-------------|
| 602.06 sq.m. | 42.00 sq.m.  | 644.26 sq.m. | 5           |

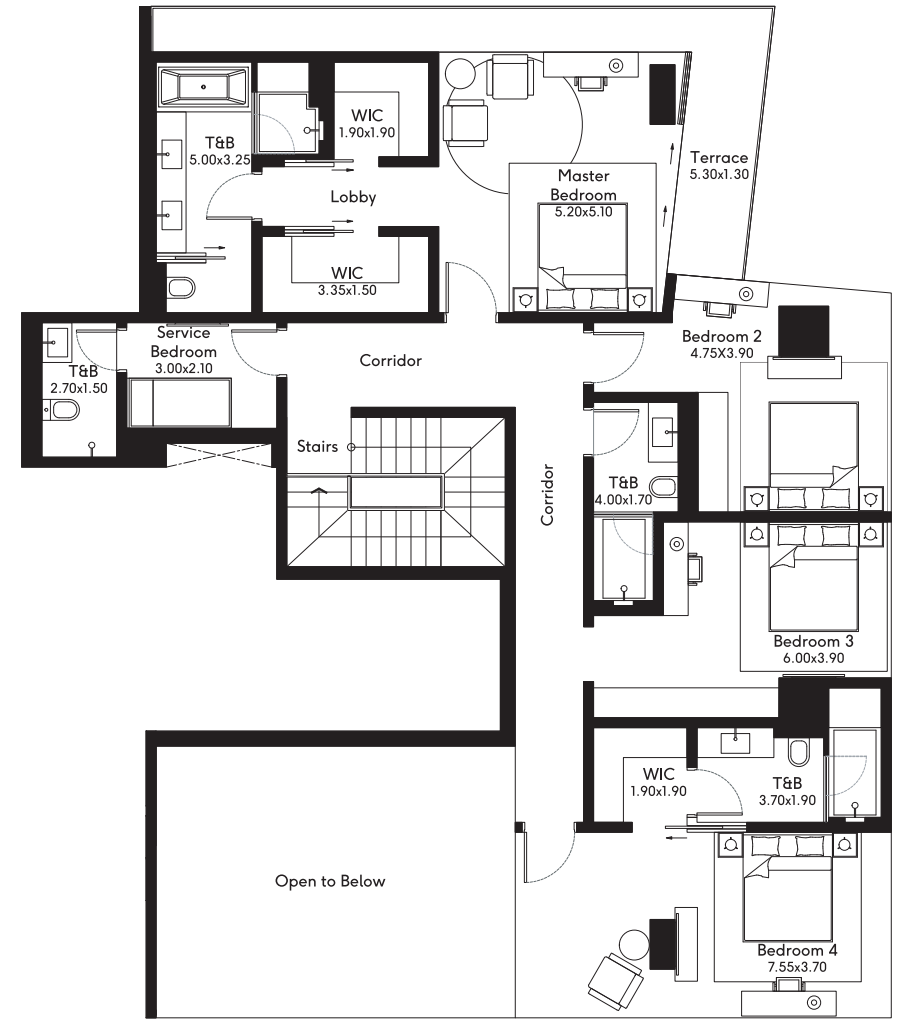


Disclaimer: Dimensions mentioned for the spaces are in meters. Floor Plans for The Vue are approximate measurements only. Exact layout and sizes may vary within a tolerance of 5%. Dimensions are taken from architectural drawings and could vary during construction. They are provided for guidance. Due to the shape of some rooms, all room dimensions are approximate.

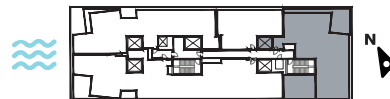
**TYPE B (LEVEL 1) - FOUR BEDROOM UNIT**  
203.93 sq.m.



**TYPE B (LEVEL 2) - FOUR BEDROOM UNIT**  
203.70 sq.m.



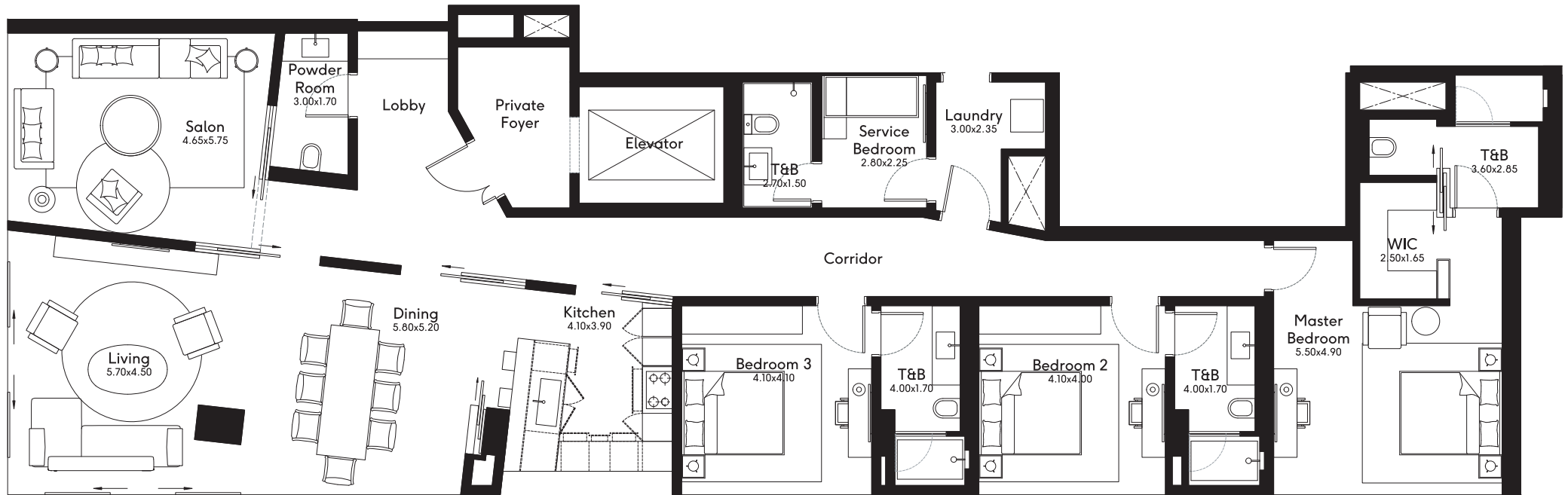
B - Level 6, 8, 10 & 12



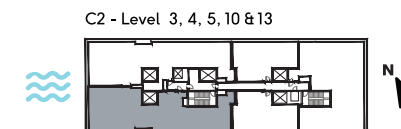
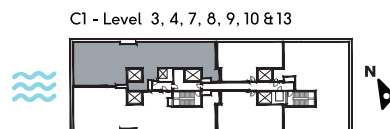
| Unit Area    | Terrace Area | Total Area   | Total Units |
|--------------|--------------|--------------|-------------|
| 407.63 sq.m. | 85.60 sq.m.  | 493.23 sq.m. | 4           |

Disclaimer: Dimensions mentioned for the spaces are in meters. Floor Plans for The Vue are approximate measurements only. Exact layout and sizes may vary within a tolerance of 5%. Dimensions are taken from architectural drawings and could vary during construction. They are provided for guidance. Due to the shape of some rooms, all room dimensions are approximate.

TYPE C - THREE BEDROOM UNIT - 273.57 sq.m.

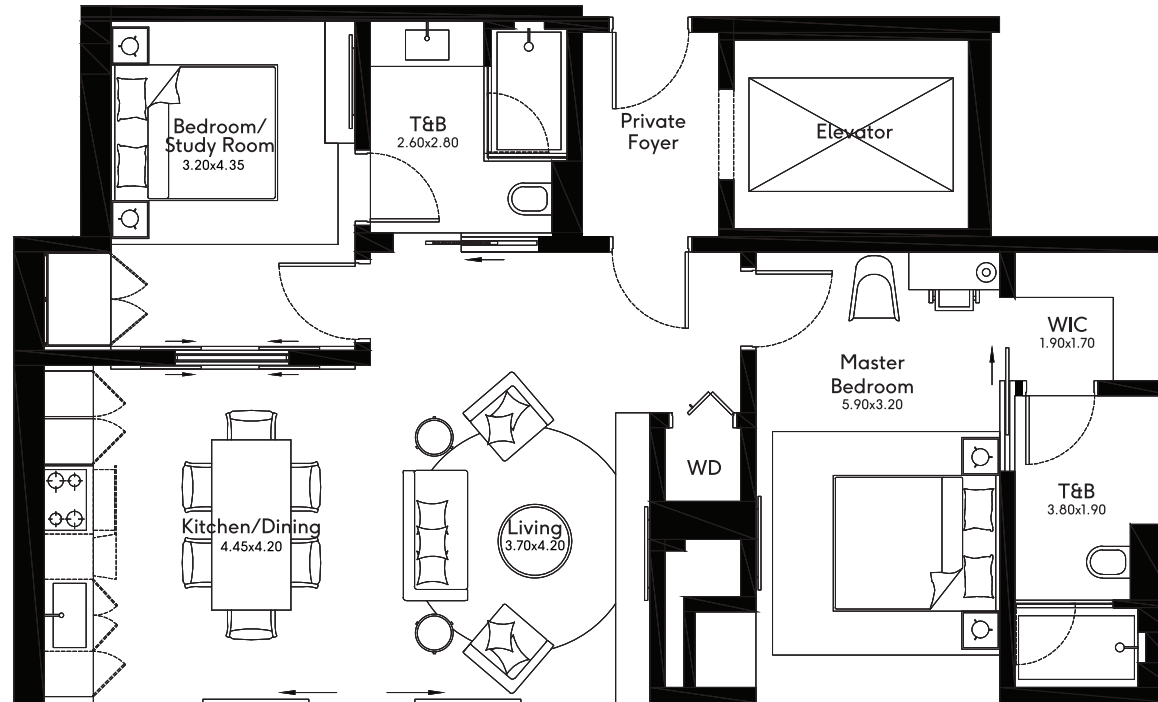


| Unit Area    | Terrace Area | Total Area   | Total Units |
|--------------|--------------|--------------|-------------|
| 273.57 sq.m. | -            | 273.57 sq.m. | 12          |

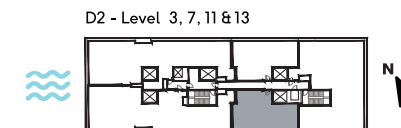
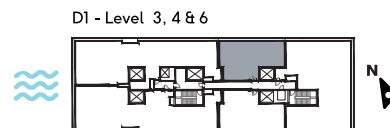


Disclaimer: Dimensions mentioned for the spaces are in meters. Floor Plans for The Vue are approximate measurements only. Exact layout and sizes may vary within a tolerance of 5%. Dimensions are taken from architectural drawings and could vary during construction. They are provided for guidance. Due to the shape of some rooms, all room dimensions are approximate.

TYPE D - ONE BEDROOM UNIT - 115.86 sq.m.



| Unit Area    | Terrace Area | Total Area   | Total Units |
|--------------|--------------|--------------|-------------|
| 115.86 sq.m. | -            | 115.86 sq.m. | 7           |

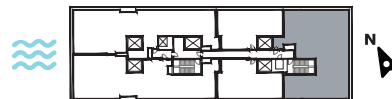


Disclaimer: Dimensions mentioned for the spaces are in meters. Floor Plans for The Vue are approximate measurements only. Exact layout and sizes may vary within a tolerance of 5%. Dimensions are taken from architectural drawings and could vary during construction. They are provided for guidance. Due to the shape of some rooms, all room dimensions are approximate.

TYPE E - THREE BEDROOM UNIT - 273.79 sq.m.



E - Level 3 & 4

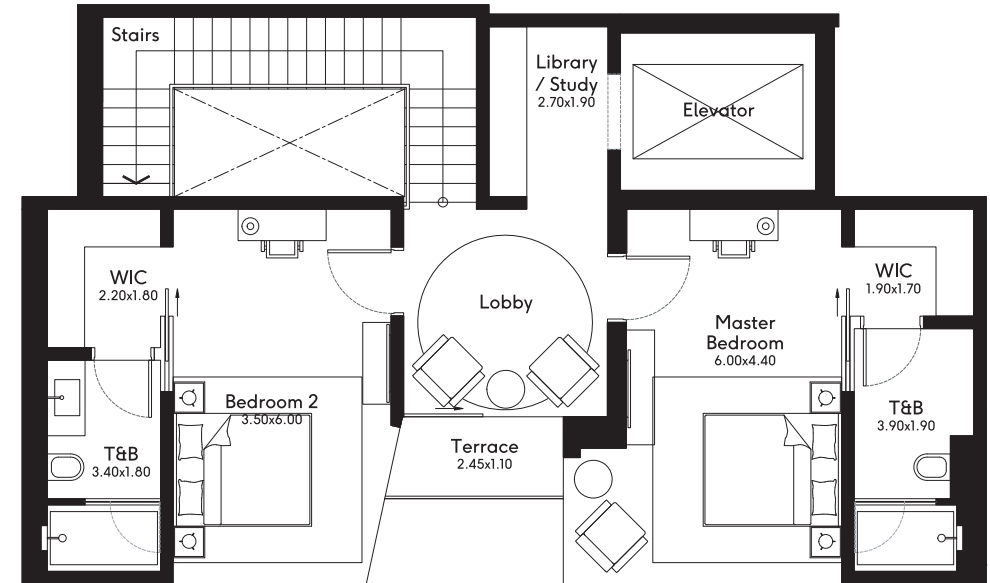
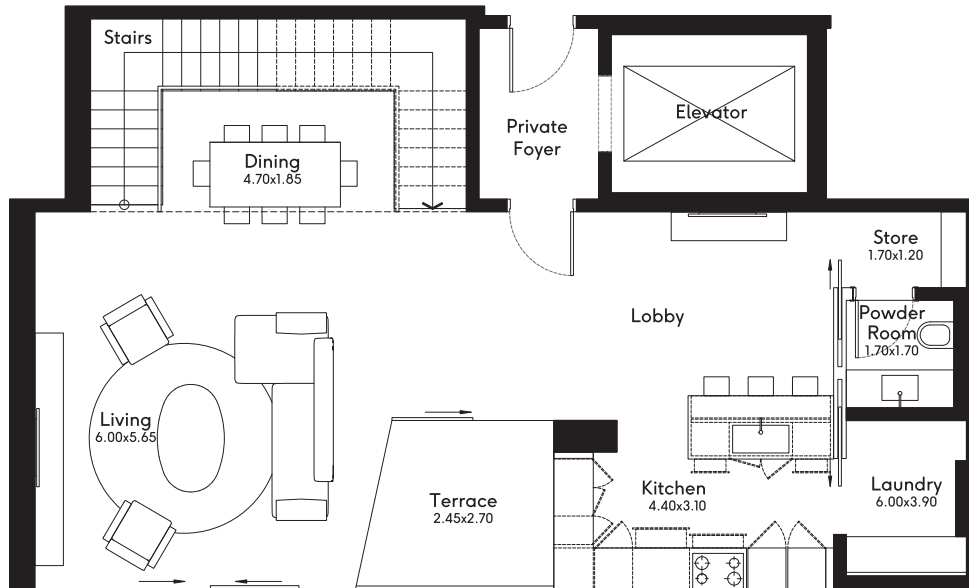


| Unit Area    | Terrace Area | Total Area   | Total Units |
|--------------|--------------|--------------|-------------|
| 273.79 sq.m. | -            | 273.79 sq.m. | 2           |

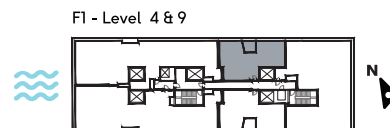
Disclaimer: Dimensions mentioned for the spaces are in meters. Floor Plans for The Vue are approximate measurements only. Exact layout and sizes may vary within a tolerance of 5%. Dimensions are taken from architectural drawings and could vary during construction. They are provided for guidance. Due to the shape of some rooms, all room dimensions are approximate.

TYPE F (LEVEL 1) - TWO BEDROOM UNIT  
108.51 sq.m.

TYPE F (LEVEL 2) - TWO BEDROOM UNIT  
108.50 sq.m.

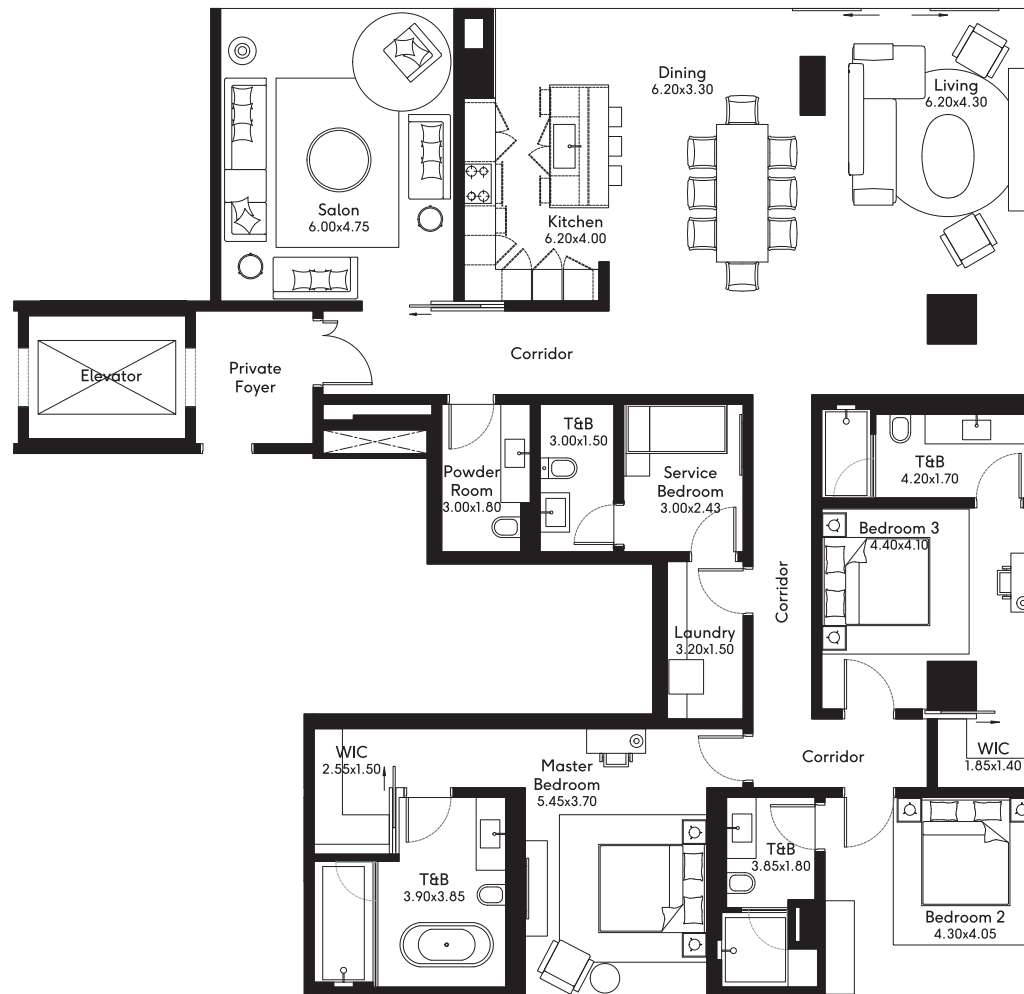


| Unit Area    | Terrace Area | Total Area   | Total Units |
|--------------|--------------|--------------|-------------|
| 217.01 sq.m. | 11.06 sq.m.  | 228.07 sq.m. | 5           |

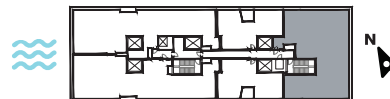


Disclaimer: Dimensions mentioned for the spaces are in meters. Floor Plans for The Vue are approximate measurements only. Exact layout and sizes may vary within a tolerance of 5%. Dimensions are taken from architectural drawings and could vary during construction. They are provided for guidance. Due to the shape of some rooms, all room dimensions are approximate.

TYPE G - THREE BEDROOM UNIT - 284.90 sq.m.



G - Level 5



| Unit Area    | Terrace Area | Total Area   | Total Units |
|--------------|--------------|--------------|-------------|
| 284.90 sq.m. | -            | 284.90 sq.m. | 1           |

Disclaimer: Dimensions mentioned for the spaces are in meters. Floor Plans for The Vue are approximate measurements only. Exact layout and sizes may vary within a tolerance of 5%. Dimensions are taken from architectural drawings and could vary during construction. They are provided for guidance. Due to the shape of some rooms, all room dimensions are approximate.